



Symbol

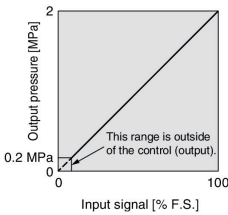
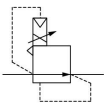


Fig. 1. Input/output characteristics chart

Standard Specifications

Model		ITVH2000
Minimum supply pressure		Whichever is higher: 0.5 MPa or the set pressure + 0.2 MPa
Maximum supply pressure		3.0 MPa
Set pressure range ^{Note 1)}		0.2 to 2.0 MPa
Power supply	Voltage	24 VDC ±10%
	Current consumption	0.12 A or less
Input signal	Current type ^{Note 2)}	4 to 20 mA DC, 0 to 20 mA DC (Sink type)
	Voltage type	0 to 5 VDC, 0 to 10 VDC
	Preset input type	4 points (Negative common)
Input impedance	Current type	500 Ω or less
	Voltage type	6.0 to 6.5 kΩ (at 25°C)
	Preset input type	Approx. 4.7 kΩ
Output signal ^{Note 3)} (Monitor output)	Analog output	1 to 5 VDC Output impedance: 1 kΩ or more Output accuracy: ±6% F.S. or less
		4 to 20 mA (Sink type) Output impedance: 250 Ω or less Output accuracy: ±6% F.S. or less
	Switch output	NPN open collector output: Max. 30 V, 80 mA Hysteresis: ±3% F.S. Self-diagnosis: ±5% F.S. or less
		PNP open collector output: Max. 80 mA Hysteresis: ±3% F.S. Self-diagnosis: ±5% F.S. or less
Linearity		±1% F.S. or less
Hysteresis		1% F.S. or less
Repeatability		±1% F.S. or less
Sensitivity		±1% F.S. or less
Temperature characteristics		±0.12% F.S. or less/°C
Output pressure display	Accuracy	±2% F.S. or less ±1 digit
	Minimum unit ^{Note 4)}	MPa: 0.01, kgf/cm ² : 0.1, bar: 0.1, psi: 1
Ambient and fluid temperature		0 to 50°C (No condensation)
Weight		Approx. 630 g (without options)

Note 1) Refer to Figure 1 for the relationship between set pressure and input signal.

Note 2) 2-wire type 4 to 20 mA is not available. Power supply voltage 24 VDC is required.

Note 3) Select either analog output or switch output. Further, when switch output is selected, select either NPN output or PNP output. When measuring analog output of 1 to 5 VDC with a load impedance less than 100 kΩ, the analog output may not obtain the output accuracy of ±6% F.S. or less.

Note 4) Adjustment of numerical values such as the zero/span adjustment is set based on the minimum units for output pressure display. Note that the unit cannot be changed.

Note 5) The above characteristics are confined to the static state. When air is consumed on the output side, the pressure may fluctuate.

Note 6) This product is not certified by Japan's High Pressure Gas Safety Act.